

TIRUPATI AYURVEDA



FOR JOINT & MUSCLE PAIN

Analgesic

Pack : 50 ml Oil

Analgesic



Pack : 5 x 1 x 10 Tablets

Analgesic



Pack : 50 ml Oil

Analgesic



Pack : 30 gm Ointment

Analgesic



Pack : 5 x 1 x 10 Tablets



TIRUPATI AYURVEDA



| Sr No. | Product Category | Dosage Form | Composition |
|--------|------------------|-------------|--|
| 1 | Analgesic | Tablet | Each film coated tablet contains : Kunduru (Boswellia serrata) Exudate 150 mg + Amalaki (Emblica officinalis) Dried Fruit Extract (Aq) 150 mg + Sunthi (Zingiber officinale) Rhizome Extract (Aq.) 150 mg + Rasna (Pluchea lanceolata) Leaf Extract (Aq) 100 mg + Haridra (Curcuma longa) Rhizome Extract (Aq.) 200 mg Excipients q.s. + Colours: Red Iron Oxide, Black Iron Oxide and Titanium Dioxide IP + Preservatives: Sodium Methyl Paraben IP, Sodium Propyl Paraben |
| 2 | Analgesic | Oil | Each 100 ml contains : Gandhapura ka tel (Gaultheria fragrantissima) (Leaf) 28 ml + Karpura (Cinnamomum camphora) Leaves 11 ml + Pudina (Mentha arvensis) Leaf Extract 10 ml + Pudina ka tel (Mentha arvensis) Leaf 6 ml + Nilgiri ka tel (Eucalyptus globulus) Leaf 6 ml + Cajuput Tel (Melaleuca leucadendron) Leaf 6 ml + Lavang ka tel (Syzygium aromaticum) Flower Bud 5 ml + Dalchini ka tel (Cinnamomum zeylanicum) Dried inner bark 5 ml + Lavender ka tel (Lavandula stoechas) Flower 5 ml |
| 3 | Analgesic | Ointment | Gandhapuraa (Gaultheria fragrantissima) Leaves 15% w/w + Kapur (Cinnamomum camphora) (Leaves) 5% w/w + Sarala (Pinus roxburghii) (Heartwood) 3% w/w + Pudina (Mentha viridis) (Aerial part) 3% w/w + Lavang (Eugenia caryophyllus) (Flower bud) 3% w/w + Nilgiri (Eucalyptus globulus) (Leaves) 2% w/w. Base q.s. |
| 4 | Analgesic | Ointment | Each 30 gm contains : Gandhapuraa Oil (Gaultheria fragrantissima) Leaf 24.00% w/w + Pudina (Mentha viridis/Mentha arvensis) Aerial part 7.00% w/w +Kapur (Cinnamomum camphora)Crystal 4.00% w/w + Nilagiri Oil (Eucalyptus globulus) Leaf 3.50% w/w, Sarala Oil (Pinus roxburghii) Heart wood 3.00% w/w + Lal Mirch Oil (Capsicum annum)Fruit 2.50% w/w + Ajwain Oil (Trachyspermum ammi) Fruit 0.20% w/w + Lavanga Oil (Eugenia caryophyllus)Flower bud 1.00% w/w + Daalchini Oil (Cinnamomum zeylanicum) Bark 0.02% w/w, Base q.s. |
| 5 | Antacid | Powder | Each 5 g contains: Svarjiksara(2.7764 G) + Nimbukamlam(2.0286 G) + Jeera(0.1 G) |
| 6 | Antacid | Powder | Each 5 g contains: Svarjiksara (Shudh) 2.20 g + Nimbukamlam (Shushkam) 2.07 g + Contains permitted sweetener: Sodium Saccharin IP 33 mg per 5g sachet. Permitted Colours: Sunset Yellow FCF, Tartrazine Yellow, Carmoisine & Indigo Carmine and added flavour q.s. |
| 7 | Antacid | Powder | Each 5 g contains: Svarjiksara (Shudh) 2.63 g + Nimbukamlam (Shushkam) 1.91 g + Contains permitted sweetener. + Sodium Saccharin IP 12 mg/5g, Permitted Colour: Tartrazine and added flavour q.s. |
| 8 | Antacid | Powder | Each 5 g contains: Svarjiksara (Shudh) 2.90 g + Nimbukamlam (Shushkam) 2.10 g |
| 9 | Antacid | Powder | Each 5 g contains: Svarjiksara (Shudh) 2.85 g + Nimbukamlam (Shushkam) 1.91 g + Contains permitted sweetener: Sodium Saccharin IP 15 mg/5g, Permitted Colour: Brilliant Blue FCF, Tartrazine and added flavour q.s. |
| 10 | Antacid | Powder | Each 5 g contains: Svarjiksara (Shudh) 2.85 g +Nimbukamlam (Shushkam) 1.95 g + Contains permitted sweetener: Sodium Saccharin IP 15 mg/5g, Permitted Colour: Sunset Yellow FCF and added flavour q.s |
| 11 | Antacid | Powder | Ingredients (Per 5 g): Svarjiksara (Shudh) 2.92 g + Nimbukamlam (Shushkam) 2.08 g |
| 12 | Antacid | Powder | Each 5 g contains: Svarjiksara (Shudh) 2.63 g + Nimbukamlam (Shushkam) 1.91 g + Contains permitted sweetener. + Sodium Saccharin IP 12 mg/5g, Permitted Colour: Tartrazine and added flavour q.s. |
| 13 | Antacid | Powder | Each 5 g contains: Svarjiksara (Shudh) 2.87 g + Nimbukamlam (Shushkam) 1.93 g + Contains Permitted Sweetener: Saccharin Sodium IP 15 mg/5g, Rasa Tarangini + Colours: Brilliant Blue FCF, Tartrazine & Added Flavours |



ACIDITY CAN
STRIKE
ANYWHERE
ANYTIME

Antacid

Pack : 6 x 5g Sachet



Antacid



Pack : 50 x 5g Sachet

Antacid



Pack : 48 x 5g Sachet



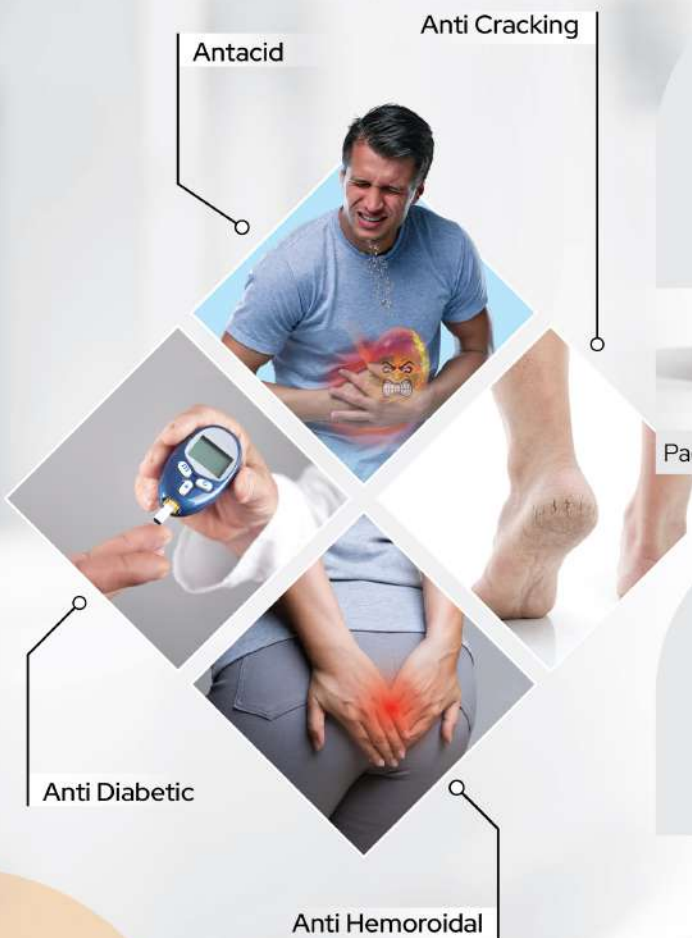
| Sr No. | Product Category | Dosage Form | Composition |
|--------|------------------|-------------|---|
| 14 | Antacid | Powder | Each 5 g contains: Svarjiksara (Shudh) 2.87 g + Nimbukamlam (Shushkam) 1.93 g + Contains Permitted Sweetener: Saccharin Sodium IP 15 mg/5g, |
| 15 | Antacid | Powder | Each 5 g contains: Svarjiksara (Shudh) 2.83 g + Nimbukamlam (Shushkam) 1.97 g + Contains permitted sweetener: Sodium Saccharin IP 15 mg/5g. Permitted Colour: Brilliant Blue FCF, Tartrazine and added Flavours q.s. Each 5 g contains: Svarjiksara (Shudh) 2.83 g + Nimbukamlam (Shushkam) 1.97 g Contains, permitted sweetener: Sodium Saccharin IP 13 mg/5g. Permitted Colour: Ponceau 4R and Added Flavours q.s. |
| 16 | Antacid | Powder | Each 5 g contains: Svarjiksara (Shudh) 2.940 g Nimbukamlam (Shushkam) 2.059 g + Contains permitted sweetener: Excipients q.s. |
| 17 | Antacid | Powder | Each 5 g contains: Svarjiksara (Shudh) 2.63 g + Nimbukamlam (Shushkam) 1.91 g + Contains permitted sweetener: Sodium Saccharin IP 33 mg/ 5g Permitted Colours: Sunset Yellow FCF, Tartrazine, Indigo Carmine, Carmoisine & added flavour q.s., |
| 18 | Antacid | Powder | Each 5 g contains: Svarjiksara (Shudh) 2.63 g , Nimbukamlam (Shushkam) 1.91 g + Contains permitted sweetener: Sodium Saccharin IP 7 mg/ 5g , Permitted Colours: Tartrazine & added flavour q.s. |
| 19 | Antacid | Powder | Each 5 g contains: Svarjiksara (Shudh) 2.63 g + Nimbukamlam (Shushkam) 1.91 g + Contains permitted sweetener: Sodium Saccharin IP 15 mg/ 5g + Permitted Colours: Sunset Yellow FCF & Added Orange flavour Excipients q.s. |
| 20 | Antacid | Powder | Each 6.25 g contains: Svarjiksara (Shudh) 3.608 g + Nimbukamlam (Shushkam) 2.035 g + Khatika Churna 0.500 g Excipients q.s + Contains permitted sweetener: Sodium Saccharin IP 15.6 mg /6.25 g. + Permitted Colour: Sunset Yellow FCF Permitted Colour: Sunset Yellow FCF, |
| 21 | Antacid | Powder | Each 6.25 g contains: Svarjiksara (Shudh) 3.608 g + Nimbukamlam (Shushkam) 2.035 g + Khatika Churna 0.500 g Excipients q.s Contains permitted sweetener: Sodium Saccharin IP 12 mg /6.25 g. |
| 22 | Antacid | Powder | Each 5 g contains: Svarjiksara (Shudh) 2.7764 g Nimbukamlam (Shushkam) 2.0286 g + Jeera(Cuminum cyminum) 0.1g Excipients q.s. + Contains permitted sweetener: Sodium Saccharin IP 20 mg/ 5g + Jeera flavour |
| 23 | Antacid | Powder | Each 5.03 g contains: Svarjiksara 2.904 g + Nimbukamlam (Citrus medica) 2.030 g Excipients q.s Colours: Quinoline Yellow WS, Carmoisine indigo carmine, Sunset Yellow FCF, Tartrazine + Contains permitted sweetener: Sodium Saccharin IP 6.0 mg/5.03 g. |
| 24 | Antacid | Powder | Each 5 g contains: Svarjiksara (Shudh) 2.7764 g + Nimbukamlam (Shushkam) 2.0286 g + Jeera Cuminum cyminum) 0.1g Excipients q.s., Contains permitted sweetener: Sodium Saccharin IP 20 mg/ 5g Jeera flavour |
| 25 | Antacid | Powder | Ingredients: Maltodextrin + Acidity Regulator (Citric acid) + Raising Agent (Sodium Hydrogen carbonate) + Herb Extract {Kaunchbeej (Mucuna pruriens) 2.0 % + Safed Musali (Chlorophytum borivillanum) 1.2 % Spirulina – (Athrospira platensis) 0.02 %} + Thiamine Hydrochloride + Riboflavin + Niacin + Calcium D Pantothenate + Cyanocobalamin + Ferrous Fumarate + Copper gluconate + Sweetener (Sucralose) CONTAINS PERMITTED NATURAL COLOUR (INS 150d) AND ADDED FLAVOUR NATURE IDENTICAL FLAVOURING SUBSTANCE –COFFEE)." |
| 26 | Antacid | Powder | Each 5 g contains:Svarjiksara (Shudh) 2.9445 g + NimbuSatva (Citrus medica) 1.9634 g Excipients q.s.Contains permitted sweetener: Saccharin Sodium IP 6 mg/ 5g, Permitted colour: Quinoline Yellow Supra color, Idacol Carmeline, Flavour: Beer Flavour (Cooler Flavouring Powder & FL Frothy EC |
| 27 | Antacid | Powder | Each 5g Sachet Contains: Extract: Triphala Fr. & Fr.R. 50 mg. + Powders: Nimbukamla 2420 mg + Svarjikshara 1870 mg + Jeeraka (Cuminum Cyminum) Sd. 100 mg.+ Other Ingredients: Sodium Saccharin 0.25% |



QUICK RELIEF FROM ACIDITY & GAS

Antacid

Pack : 50 x 5g Sachet



Antacid



Pack : 40 Sachet

Anti Cracking



Pack : 25g Cream

Anti Diabetic



Pack : 125g Granules

Anti Hemoroidal



Pack : 20 x 30g Cream



| Sr No. | Product Category | Dosage Form | Composition |
|--------|------------------|-------------|--|
| 28 | Antacid | Powder | Each 5g Sachet Contains: Extract: Triphala Fr. & Fr.R. 50 mg.+ Powders: Nimbukamla 2420 mg + Svarjikshara 1870 mg + Jeeraka (Cuminum Cyminum) Sd. 100 mg + Other Ingredients: Sodium Saccharin 0.25% |
| 29 | Antacid | Powder | Each 5g Sachet Contains: Extract: Triphala Fr. & Fr.R. 50 mg. + Powders: Nimbukamla 2420 mg + Svarjikshara 1870 mg + Jeeraka (Cuminum Cyminum) Sd. 100 mg.+ Other Ingredients: Sodium Saccharin 0.1375% |
| 30 | Antacid | Powder | Each 5g contains: Svarjiksara (Shudh) Powder 2.874 g + Nimbu Satva (Citrus Medica) Powder 2.014 g + Excipients q.s + Colour : Sunset Yellow FCF + Flavour: Orange encalp, Peppermint Flavour, Cooler Flavour Contains permitted sweetener: Sodium Saccharin IP 15 mg/5g |
| 31 | Antacid | Powder | Each 5 g contains : Svarjiksara (Shudh) Powder 2.63 g + Nimbu satva (Citrus medica) Powder 1.91 g + Excipients qs Contain permitted sweetener: Saccharin Sodium 7 mg/5 g, + Colour: Tartrazine + Flavour: – Lemon |
| 32 | Antacid | Powder | Each 5g contains: Svarjiksara (Shudh) Powder 2.63 g + Nimbu satva (Citrus medica) Powder 1.91 g + Excipients Contains permitted sweetener: Saccharin Sodium IP – 15 mg/5 g + Colour: Sunset Yellow FCF + Flavour: –Orange flavor,Cooler flavor, Peppermint Flavour |
| 33 | Antacid | Powder | Each 5g contains: Svarjiksara (Shudh) Powder 2.63g + Nimbu satva (Citrus medica) Powder 1.91 g + Excipients Contains permitted sweetener: Saccharin Sodium IP – 15 mg/5 g + Colour: Sunset Yellow FCF + Flavour: Orange flavor,Cooler flavor, Peppermint Flavour |
| 34 | Antacid | Powder | Each 5 g contains: Svarjiksara (Shudh)Pwdr. 2.904g + Nimbu satva (Citrus medica)Pwdr. 2.035 g + Excipients q.s. + Colour : Tartrazine Yellow Flavour: Lemon Flavour, Peppermint Flavour, Cooler Flavour Contains permitted sweetener: Sodium Saccharin IP 12 mg/5g," |
| 35 | Antacid | Powder | Each 5g contains: Svarjiksara (Shudh) Pwdr 2.874 g + Nimbu Satva (Citrus Medica) Pwdr 2.014 g + Excipients q.s + Colour : Sunset Yellow FCF |
| 36 | Antacid | Powder | Each 5g contains: Svarjiksara (Shudh)Pwdr 2.90 g + Nimbu Satva (Citrus medica)Pwdr 2.10 g |
| 37 | Antacid | Powder | Each 5 g contains: Svarjiksara (Shudh) Pwdr. 2.9042 g + Nimbu satva (Citrus medica) Pwdr. 2.035 g + Colour : Tartrazine Yellow Flavor : Lemon Flavor, Peppermint Flavour, Cooler Flavour + Contains permitted sweetener : Sodium Saccharin IP 12 mg/5 g |
| 38 | Anti Cracking | Cream | Each 100g contains liquid extract derived from: Lodhra(Symplocos racemosa) + Stem bark + Arjuna Terminalia arjuna) + Stem bark + Vacha(Acarus calamus) + Dried Rhizome + Yashtimadhu (Glycyrrhiza glabra) + Root + Manjistha(Rubia cordifolia) + Dried Stem + Daruharidra (Berberis aristata) + Dried Stem + Haldi (Curcuma longa) + Dried Rhizome + Majuphal (Quercus infectoria) + Dried Galls+ Jivanti (Leptadenia reticulata) + Dried Root+ Kampilla (Mallotus philippinensis) glands + hairs of fruit Each 0.044g Base q.s. Preservatives: Methylparaben IP & Propylparaben IP + Colours: Quinoline Yellow Lake |
| 39 | Anti Diabetic | Powder | Each 100 g contains : Gudmaar(Gymnema sylvestre) Leaf 20g + Jamuna(Syzygium cuminii) Seeds 10g + Vijayasara (Pterocarpus marsupium) + HeartWood 10g + Karela(Momordica charantia) + Fruit 10g + Methi(Trigonella foenumgraecum) + Seeds10g + Baheda(Terminalia bellirica) + Fruit Pericarp 10g + Saunf (Foeniculum vulgare) fruits6g + Asgandh(Withania Somnifera) 5g + Harad (Terminalia chebula) + Fruit Pericarp 5g + Saptaranga (Salacia chinensis) + Roots 5g + Amla (Embelica officinalis) Fruit Pericarp 2g + Devdar (Cedrus deodara) + Heart wood 1.3g + Bael(Aegle marmelos) + Leaf 1g + Kalaunji(Nigella sativa) Seeds1g + Inderjauw (Holarrhena pubescens) + Stem Bark 1g + Jarul(Lagerstroemia flosreginae) + Leaf 0.5g + Daruhaldi (Berberis aristata) + Root 0.5g + Nimba (Azadirachta idica) + Leaf 0.8g + Giloy (Tinospora cordifolia) + Stem 0.5g + Sudh Shilajit(Ashphaltum) 0.2g + Preservatives : Sodium Methylparaben IP, Sodium Propylparaben IP |
| 40 | Anti Hemoroidal | Cream | In % w/w: Rajat(In Nano form)Silver 6.6 + Haldi(In Nano form) (Curcuma longa)Rhizome1.0 + Yavani satva (Thymol) (Trachyspermum ammi) crystals 0.2 + Pudina(Menthol) (Mentha piperata) Crystal 1.5 + Elva (Aloe vera)Leave aq. extract 4.0 + Marigold (Tagetes erecta)Flower extract 1.5 + Lajjalu (Mimosa pudica) Whole plant aq. extract1.0 + Akarkara (Anacyclus pyrethrum) Roots aq. extract 0.225 + Excipients q.s. Preservative: Methyl Paraben IP & Propyl Paraben IP |

UNIQUE
SUPPORTIVE
SUPPLEMENT
FOR DENGUE

Platelets Enhancer

Pack : 150ml Syrup



Antianxiety



Pack : 1 x 60 Tablets

Anti Hangover



Pack : 10 x 1 x 5 Capsules

Anti-Inflammatory



Pack : 10 x 1 x 10 Tablets

Anti Rash



Pack : 20 x30g Cream

Anti Rash



Pack : 20 x30g Cream

Aphrodisiac



Pack : 60N Tablets

TIRUPATI AYURVEDA



| Sr No. | Product Category | Dosage Form | Composition |
|--------|------------------------------------|-------------|--|
| 41 | Anti Malarial | Syrup | Each 5ml (one teaspoonful) contains aqueous extract of : Papitaa (Carica papaya) Leaf Extract 275 mg + Excipients q.s.+Preservatives: Sodium Methylparaben I.P., Sodium Benzoate I.P. + Flavour: Orange + |
| 42 | Antianxiety | Tablet | Each 1120 mg coated tablet contains: Ashwagandha (Withania somnifera) Root dry extract 250 mg + Jatamansi (Nardostachys jatamansi) Rhizome dry extract 50 mg + Sarpagandha (Rauwolfia serpentina) + Root dry extract 50 mg + Vacha (Acorus calamus) Rhizome dry extract 25 mg + Haritaki (Terminalia chebula) Fruit dry extract 50 mg + Shankhpushpi (Convolvulus pluricaulis) Plant dry extract 50 mg + Shunthi (Zingiber officinale) Rhizome dry extract 50 mg + Shilajit (Asphaltum) Exudate 50 mg + Garlic (Allium sativum) Fruit dry extract 25 mg + Excipients q.s. + |
| 43 | Antianxiety | Oral liquid | Each 60 ml contains: Kaunch beej (Mucuna pruriens) Sd. Hyd. Alc. Ext 200 mg Jatamansi Nardostachys jatamansi) Rz. Aq. Ext 150mg + Jatiphala (Myristica fragrans) Sd. Aq. Ext 75mg + Swetmusli (Chlorophytum tuberosum) Rt. Hyd. Alc. Ext 35 mg + Vacha (Acorus calamus) Rz. Aq. Ext 25 mg + Sarpagandha (Rauwolfia serpentina) Rt. Aq.Ext 50 mg Base qs. |
| 43 | Anti Hangover | Capsule | Each Capsule Contains: Kharjura (Phoenix dactylifera) Fruit powder 50 mg + Kasani (Cichorium intybus) Seed Extract (dry) (aq.) 50 mg + Kalmegh (Andrographis paniculata) Whole plant extract (dry) (aq.) 50 mg + Draksha (Vitis vinifera) Fruit Extract (dry) (aq.) 50mg + Bhumyamalaki (Phyllanthus amarus) Whole plant extract (dry) (aq.) 35 mg + Amalaki (Embolica officinalis) Fruit Extract (dry) (aq.) 35 mg + Haritaki (Terminalia chebula)Fruit Extract (dry) (aq.) 35 mg Excipients q.s. + Preservatives: Sodium Benzoate IP |
| 44 | Anti Hangover | Capsule | Each capsule contains: Kharjura (Phoenix dactylifera) Fruit Powder 50 mg + Kasani (Cichorium intybus) Seed Dry Aq. Extract 50 mg + Kalmegh (Andrographis paniculata) Wh. Pt. Aq. Extract 50 mg + Draksha (Vitis venifera) Fruit Dry Hyd. Alc. Extract 50 mg + Bhumymlaki (Phyllanthus niruni) Wh. Pt. Dry Aq. Extract 35 mg + Amalaki (Embolica officinalis) Pericarp Dry Aq. Extract 35 mg + Haritaki (Terminalia chebula) Pericarp Dry Aq. Extract 35 mg |
| 45 | Anti Inflammatory | Tablet | Each tablet contains : Haldi(Curcuma longa) Rhizome Ext 500mg + Pippali (Piper longum) Fruit Ext 5 mg + Excipients |
| 46 | Anti Inflammatory/ & Antimicrobial | Tablet | Each 820 mg film coated tablet contains dried extracts of: Haldi(Curcuma longa) Rhizome Ext(Al) 500 mg + Marica (Piper nigrum) + Fruit Ext (Aq) 5 mg + Excipients q.s. |
| 47 | Anti Rash | Cream | Yashada Bhasma (Zinc oxide) Powder 2.5% w/w + Narikela (Cocos nucifera) Taila 2.0% w/w + Elva (Aloe vera) Leaf extract 2.0% w/w + Shigru (Moringa oleifera) Leaf extract 0.05% w/w + Draksha (Vitis vinifera) Fruit extract 0.05% w/w + Neem (Azadirachta indica) Leaf extract 0.05% w/w + Base q.s. Preservative : Phenoxyethanol IP |
| 48 | Anti Rash | Cream | % w/w Yashada Bhasma (Zinc oxide) Powder 3% + Elva (Aloe vera) Leaf Liq. extract 3% + Narikela (Cocos nucifera)Endocarp oil2% + Karanj (Pongamia pinnata)Seed oil2% + Shudh Tankan(Borax) Powder1% + Shigru (Moringa oleifera) leaf extract 0.05% + Draksha (Vitis vinifera) fruit extract 0.05% + Neem (Azadirachta indica) leaf extract 0.05% Base q.s. Preservative : Phenoxyethanol IP + Rasa Tarangini & Bh. P" |
| 49 | Anti Rash | Cream | Composition: %w/w Yashada Bhasma (Zinc Oxide) powder 2.5%w/w + Narikela (Cocos nucifera) Endocarp oil 2.0%w/w + Elva (Aloe vera) Leaf Lq. extract 2.0%w/w + Shigru (Moringa Oleifera) Leaf Lq. extract 0.05%w/w + Draksha (Vitis vinifera) Fruit Lq. extract 0.05%w/w + Neem (Azadirachta Indica) Leaf Lq. extract 0.05%w/w Base q.s.+ Preservative : Phenoxyethanol IP 0.7%w/w |
| 50 | Anti Rash | Cream | Composition: %w/w + Yashada Bhasma (Zinc Oxide) powder 2.5%w/w + Narikela (Cocos nucifera) Endocarp oil 2.0%w/w + Elva (Aloe vera) Leaf Lq. extract 2.0%w/w + Shigru (Moringa Oleifera) Leaf Lq. extract 0.05%w/w + Draksha (Vitis vinifera) Fruit Lq. extract 0.05%w/w + Neem (Azadirachta Indica) Leaf Lq. extract 0.05%w/w Base q.s.+ Preservative : Phenoxyethanol IP 0.7%w/w + |
| 51 | Aphrodisiac | Tablet | Each tablet contains : Shilajit (Asphaltum) 500 mg Excipients q.s. |



LET'S RAISE
THE DESIRE
OF EATING
FROM INSIDE

Appetite Stimulant

Pack : 200 ml Syrup



Appetite Stimulant



Pack : 175 ml Syrup

Appetizer



Pack : 200 ml Syrup

Baby Massage



Pack : 100 ml Oil

Blood Purifier



Pack : 100 ml Syrup

TIRUPATI AYURVEDA



| Sr No. | Product Category | Dosage Form | Composition |
|--------|------------------------------|-------------|--|
| 52 | Appetite stimulant | Syrup | Each 5 ml contains aqueous extracts of: Papitaa (Carica papaya) Fruit 400 mg + Saunf (Foeniculum vulgare) Fruit 80 mg + Sunthi (Zingiber officinale) Rhizome 50 mg + Vidanga (Embelia ribes) Fruit 50 mg + Amla (Embelia officinalis) Fruit 50 mg + Citraka (Plumbago zeylanica) Root 50 mg + Safed Jira (Cuminum cyminum) Fruit 50 mg + Kapurkachri (Hedychium spicatum) Rhizome 50 mg + Ajwain (Trachyspermum ammi) Fruit 40 mg + Pippali (Piper longum) Fruit 40 mg + Nagarmotha Cyperus rotundus) Rhizome 20 mg Excipients q.s. tPreservatives: Methylparaben IP & Propylparaben IP Flavour: Pineapple, |
| 53 | Appetite stimulant | Syrup | Each 5 ml contains aqueous extracts of: Papitaa (Carica papaya) Fruit(aq) 200 mg + Saunf (Foeniculum vulgare) Fruit(al) 26 mg + Sunthi (Zingiber officinale) Rhizome(aq) 50 mg + Vidanga (Embelia ribes) Fruit(aq) 8 mg + Amla (Embelia officinalis) Fruit(aq) 50 mg + Citraka (Plumbago zeylanica) Root(aq) 41 mg + Safed jira (Cuminum cyminum) Fruit(aq) 12.5 mg + Kapurkachri (Hedychium spicatum) Rhizome(aq) 25 mg + Ajwain (Trachyspermum ammi) Fruit(aq) 25 mg + Pippali (Piper longum) Fruit(aq) 25 mg + Nagarmotha (Cyperus rotundus) Rhizome(aq) 20 mg Excipients q.s. Preservatives: Methylparaben IP & Propylparaben IP Flavour: Pineapple |
| 54 | Appetizer | Syrup | Each 5 ml contains following aqueous extracts of : Kasani(Cichorium intybus) Whole plant 70mg + Parpata (Fumaria parviflora) Whole plant 10mg + Himsra (Capparis spinosa)Root 70 mg + Bhringaraja (Eclipta alba)Whole Plant10 mg + Arjuna(Terminalia arjuna)Bark 30 mg + Mulaka (Raphanus sativus) Whole plant 9.9 mg + Kakamachi(Solanum nigrum) Fruit 30 mg + Punarnava (Boerhaavia diffusa) Whole Plant 8.4 mg + Bhumyaamalaki (Phyllanthus amarus)Whole plant 16 mg + Haritaki(Terminalia chebula)Fruit Pericarp 8mg + Biranjasipha(Achillea mellefolium)Fruit16 mg + Daruharidra (Berberis lycium)Root5 mg + Jhavuka (Tamarix gallica) leaf 16mg + Guduchi (Tinospora cordifolia)Leaf 13.5mg + Amalaki(Embelia officinalis)Fruit Pericarp10 mg + Chitraka (Plumbago zeylanica) Root 10mg + Vidanga (Embelia ribes) Fruit 20 mg + Kalamegha(Androgra phis paniculata) whole plant 16.6 mg Excipients q.s + Preservatives: Sodium Methylparaben IP 10 mg + Sodium Propylparaben IP2.5 mg + Sodium Benzoate IP25 mg + Flavor: Orange0.005 ml + Pineapple0.005 ml, Color: Caramel 20 mg |
| 55 | Appetizer | Syrup | Each 5 ml contains : Water Extract Eq. To Guduchi 75mg + Amalaki18.75 mg + Saunf 37.5mg + Yavani18.75 mg + Kutki37.5 mg + Vidang18.75 mg + Nagarmotha18.75mg + Jeera18.75 mg + Pippali 18.75 mg + Preservative Used(W/V) + Sodium Methylparaben IP0.12% + Sodium Propylparaben IP 0.02% + Sodium Benzoate IP/LD 0.20% |
| 56 | Antacid/Antiflatulent | Powder | Each 5.0 g contains: Nimbukamlam Bh. P. Satva 2.25 g + Svarjiksara Bh. P. Mineral 1.963 g + Yavakshara Bh. P. Mineral 0.40 g + Kala namak Bh. P. Salt 0.25 g Excipients q.s Contains Permitted sweetener: Sodium Saccharin IP 12 mg/5.0 g. + Bh. P. = Bhava Prakash |
| 57 | Baby Massage | Oil | Each 100ml contains: Urad (Phaseolus munga) Seed 8g + Ratanjot (Alkanna tinctoria) Root 1.7 g + Kapur (Cinnamomum camphora) Leaf 1.35 g + Shankpushpi (Convolvulus pluricaulis) whole plant extract 1 g + Nagarmotha (Cyperus rotundus) Rhizome extract 400 mg + Rasna (Pluchea lanceolata) Leaf extract 250 mg + Til Oil (Sesamum indicum) Seed q.s. to 100 ml + Preservative: Butylated Hydroxytoluene IP |
| 58 | Blood Purfier | Syrup | Each 5 ml (One teaspoonful) contains extracts of : Chakshu (Cassia absus) Seed 9.09 mg + Senna (Cassia angustifolia)Leaf 16.45 mg + Nisoth(Operculina turpethum)Root 25.45 mg + Gulab (Rosa centifolia) Petal 24.77 mg + Sheesham(Dalbergia sissoo)bark13.40 mg + Giloe(Tinospora cordifolia) Stem 14.09 mg + Harar(Terminalia chebula) Fruit22.04 mg + Kasaundi(Cassia occidentalis) Seed 13.40 mg + Mundi(Sphaeranthus indicus)Leaf15.45 mg + Shahtara(Fumaria parviflora)Whole plant22.72 mg + Kachnal(Bauhinia racemose)Bud 15.45 mg + Neem (Azadirachta indica) Leaf 19.43 mg + Tulsi(Ocimum sanctum)Panchang 13.40 mg + Kachur(Curcuma zedoaria) Rhizome 11.36 mg + Daaruhaldi (Berberis aristata)Root 9.43 mg + Chopcheenee (Smilax china) Root 11.36 mg + Shankpushpi(Convolvulus pluricaulis)Panchang 14.09 mg + Sarpunkha (Tephrosia purpurea)Panchang 18.06 mg + Brahmi(Bacopa monnieri) Panchang 9.09 mg + Kasni (Cichorium intybus) Seed 9.09 mg + Unnab(Zizyphus vulgaris) fruit 11.36 mg + Revand chini(Rheum emodi) Root 22.72 mg + Chirata (Swertia chirata)Panchang 17.38 mg + Kikkar(Acacia arabica)Bark 42.84 mg, Excipients q.s. + Preservatives : Sodium Benzoate IP and Potassiun Sorbate IP + Colour : Caramel |

STRENGTHENS
BONES
RELIEVES JOINT
PAIN



Bone Care

Pack : 60 Tablets

Cough & Cold



Pack : 80 Tablets

Cough & Cold



Pack : 20ml Drops

Cough & Cold



Pack : 100 ml Syrup

Cough & Cold



Pack : 100ml Syrup





| Sr No. | Product Category | Dosage Form | Composition |
|--------|-------------------------|-------------|--|
| 59 | Bone Care | Tablet | Each tablet is prepared from: Hadjod (<i>Cissus quadrangularis</i> , St., Ext.) 250mg Excipients q.s. |
| 60 | Cough & Cold | Tablet | Each tablet contains : Tulsi (<i>Ocimum sanctum</i> Ext. 250mg Excipients q.s. |
| 61 | Cough & Cold | Syrup | Each 5 ml contains extracts derived from : Madhu (Honey) 1500 mg + Yashtimadhu (<i>Glycyrrhiza glabra</i>) Root 175 mg + Tulsi (<i>Ocimum sanctum</i>) Leaf 160 mg + Vasaka (<i>Adhatoda vasica</i>) Leaf 150 mg + Talishpatra (<i>Taxus baccata</i>) Leaf 100 mg + Sunthi (<i>Zingiber officinale</i>) Rhizome 75 mg + Haldi (<i>Curcuma longa</i>) Rhizome 75 mg + Banashpa (<i>Viola odorata</i>) Aerial Part 50 mg + Pippali (<i>Piper longum</i>) Fruit 50 mg + Shati (<i>Hedychium spicatum</i>) Rhizome 50 mg + Munkka (<i>Vitis vinifera</i>) Fruit 40 mg Flavoured Syrup Base q. s. + Preservatives: Sodium Methylparaben IP, Sodium Propylparaben IP & Sodium Benzoate IP |
| 62 | Cough & Cold | Syrup | Each 5 ml contains herbs of : Madhu (Honey) 1750 mg + Yashtimadhu (<i>Glycyrrhiza glabra</i>) Root 50 mg + Tulsi (<i>Ocimum sanctum</i>) Leaf 50 mg + Kantakari (<i>Solanum xanthocarpum</i>) Whole Plant 50 mg + Banashpa (<i>Viola odorata</i>) Leaf 50 mg + Talishpatra (<i>Taxus baccata</i>) Leaf 50 mg + Shunthi (<i>Zingiber officinale</i>) Rhizome 25 mg + Pippali (<i>Piper longum</i>) Fruit 25 mg + Vasa (<i>Adhatoda vasica</i>) Leaf 25 mg + Shati (<i>Hedychium spicatum</i>) Rhizome 25 mg + Pudina satva (<i>Menthol</i>) Crystal 2.5 mg + Excipients q.s. + Preservatives : Sodium Methylparaben IP, Sodium Propylparaben IP & Sodium Benzoate IP |
| 63 | Cough & Cold | Syrup | Each 5 ml contains herbs of: Madhu (Honey) 800 mg + Pippali (<i>Piper longum</i>) Fruit 25mg + Yashtimadhu (<i>Glycyrrhiza glabra</i>) Root 50 mg + Vasa (<i>Adhatoda vasica</i>) Leaf 25 mg + Tulsi (<i>Ocimum sanctum</i>) Whole plant 50 mg + Shati (<i>Hedychium spicatum</i>) Rhizome 25 mg + Kantakari (<i>Solanum xanthocarpum</i>) Whole plant 50 mg + Pudina Satva (<i>Menthol</i>) Crystal 2.5 mg + Talishpatra (<i>Taxus baccata</i>) Leaf 50 mg + Shunthi (<i>Zingiber officinale</i>) Rhizome 25 mg Excipients, Preservatives: Sodium Methylparaben IP & Sodium Propylparaben IP |
| 64 | Cough & Cold | Nasal Drop | Composition : Each 10 ml contains : Pudina Crystal (<i>Mentha Viridis</i>) (Aerial Part) 1.5 g, Ajwain oil (<i>Trachyspermum ammi</i>) (Seed) 0.2 ml, Kapur Crystal (<i>Cinnamomum Camphora</i>) (Leaf) 0.1 g, Excipients q.s. |
| 65 | Cough & Cold | Oral liquid | Each 5 ml contains aq. ext. from: Madhu (Honey) Semisolid 800 mg + Yashtimadhu (<i>Glycyrrhiza glabra</i>) Rt. Aq. Ext. 50 mg + Tulsi (<i>Ocimum sanctum</i>) wh. Pt. Aq. Ext. 50 mg + Kantakari (<i>Solanum xanthocarpum</i>) Wh. Pt. A.q. Ext. 50 mg + Talishpatra (<i>Taxus baccata</i>) Lf. Aq. Ext. 50 mg + Shunthi (<i>Zingiber officinale</i>) Rz. Aq. Ext. 25 mg + Pippali (<i>Piper longum</i>) Ft. Aq. Ext. 25 mg + Vasa (<i>Adhatoda vasica</i>) Lf. Aq. Ext. 25 mg + Shati (<i>Hedychium spicatum</i>) Rz. Aq. Ext. 25 mg + Pudina (<i>Nentha arvensis</i>) Arl. Pt. Satva 2.5 mg Excipients q.s + Preservatives: Sodium Methylparaben I.P. & Sodium Propylparaben I.P. |
| 66 | Cough & Cold | Syrup | Each 5 ml contains herbs of: Madhu (Honey) 800 mg + Pippali (<i>Piper longum</i>) Fruit 25 mg + Yashtimadhu (<i>Glycyrrhiza glabra</i>) Root 50 mg + Vasa (<i>Adhatoda vasica</i>) Leaf 25 mg + Tulsi (<i>Ocimum sanctum</i>) Whole plant 50 mg + Shati (<i>Hedychium spicatum</i>) Rhizome 25 mg + Kantakari (<i>Solanum xanthocarpum</i>) Whole plant 50 mg + Pudina Satva (<i>Menthol</i>) Crystal 2.5 mg + Talishpatra (<i>Taxus baccata</i>) Leaf 50 mg + Shunthi (<i>Zingiber officinale</i>) Rhizome 25 mg, Excipients q.s., Preservatives: Sodium Methylparaben IP & Sodium Propylparaben IP |
| 67 | Cough & Cold | Syrup | Each 10 ml contains extracts of: Kakadasingi (<i>Pistacia integerrima</i>) Gall 55 mg + Sonth (<i>Zingiber officinale</i>) Rhizome 50 mg + Yashtimadhu (<i>Glycyrrhiza glabra</i>) Root 50 mg + Tulsi (<i>Ocimum sanctum</i>) Leaf 50 mg + Adulsa (<i>Adhatoda vasica</i>) Leaf 40 mg + Kayphal (<i>Myrica esculenta</i>) Fruit 15 mg + Pippali (<i>Piper longum</i>) Fruit 10 mg + Kantakari (<i>Solanum surrattense</i>) Wh. Pl. 10 mg + Kalimirch (<i>Piper nigrum</i>) Fruit 10 mg + Pudina satva (<i>Mentha viridis</i>) Crystal 4 mg + Kapur (<i>Cinnamomum camphora</i>) Crystal 2 mg + Madhu (Honey) 750 mg Excipients q.s. Preservative: Sodium benzoate IP, Flavour: Tulsi flavour |



BREASTFEED THE
MOST PRECIOUS
MOMENT OF LOVE
BETWEEN A MOTHER
& HER BABY

Galactagogue

Pack : 250 g Granules



Galactagogue



Pack : 10 g Sachet



| Sr No. | Product Category | Dosage Form | Composition |
|--------|------------------|-------------|---|
| 68 | Galactagogue | Tablet | Each film coated tablet contains dry extract of: Shatavari (Asparagus racemosus) Rt. 200 mg + Ashwagandha (Withania somnifera) Rt. 100 mg + Methi (Trigonella foenumgraecum) Sd. 50 mg + Yastimadhu (Glycyrrhiza glabra) Rt. 50 mg + Lasuna (Allium sativum) Bulb 20 mg Excipients q.s. |
| 69 | Galactagogue | Powder | Each 100 g contains extracts of : Asparagus racemosus (Shatavari) (Mool Powder)15.0 g + Anethum sowa (Sowa) (Seed) 1.0 g + Ipomoea digitata (Ksheer Vidari) (Root tuber) 1.0 g + Glycyrrhiza glabra (Yastimadhu) (Roots) 1.5 g + Spinacia oleracea (Palak) (Seed) 2.5 g + Cuminum cyminum (Safed Jeera) (Seed) 0.5 g + Roots of Five Herbs (Panchatrina mool) 1.0 g + (Eragrostis cynosuroides (Kusha) + Saccharum spontaneum (Kasha) + Saccharum arundinaceum (Sara) + Imperata cylindrica (Darbha) + Saccharum officinarum (Lkshumoola)) + Preservatives: Sodium Benzoate IP + Sodium Methylparaben IP, Sodium Propylparaben IP |
| 70 | Galactagogue | Powder | Each 100 g contains Extracts derived from: Shatavari (Asparagus racemosus) Roots 15 g + Gokhru (Tribulus terrestris) Fruits 2 g + Vidaaree Kanda (Ipomoea digitata) Roots 1 g + Yastimadhu (Glycyrrhiza glabra) Roots 1 g + Chandrasura (Lepidium sativum) Seeds 1 g + Jeeraka (Cuminum cyminum) Fruits 1 g + Sowa (Anethum sowa) Fruits 1 g + Nagarmotha (Cyperus rotundus) Rhizomes 1 g + Excipients q.s.+ Preservative: Sodium Benzoate IP + Sodium Methylparaben, Sodium Propylparaben + Colour: Caramel |
| 71 | Galactagogue | Powder | Each 100 g contains aqueous dry extracts derived from: Shatavari + Root Extract 15.00 g + Calcium Powder 2.50 g + Palak + Seed/Leaf Powder 2.50 g + Shigru Leaf Extract (dry) 2.50 g + Yastimadhu (Glycyrrhiza glabra) + Root Extract 1.00 g + Panchatrina mool 1.00 g + (Kusha (Eragrostis cynosuroides) + Kasa + Sara (Saccharum bengalense) + Darbha (Imperata cylindrica) + Ikshu 1.00 g + Sowa Fruit Extract 1.00 g + Vidaaree Kanda (Ipomoea digitata) + Root Extract (dry) 1.00 g + Safed Jira + Fruit Extract (dry) 0.50 g Excipients q.s. + Preservative: Sodium Benzoate IP, Sodium Methylparaben IP, Sodium Propylparaben IP, |
| 72 | Galactagogue | Powder | Each 100g granule is prepared/derived from: Dried aqueous Extracts of : Jivanti (Leptadenia reticulata, Rt.) 3.20g + Yashti (Glycyrrhiza glabra,Stolon & Rt.) 2.40g + Satavari (Asparagus racemosus Rt.) 1.60g + Vidari (Pueraria tuberosa Rt.Tr.) 1.60g + Misreya (Foeniculum vulgare, Fr.) 1.60g + Manjistha (Rubia cordifolia,St.) 1.60g + Gambhari (Gmelina arborea, Rt/St.Bk.) 1.60g + Mustak (Cyperus rotundus,Rz.) 1.60g + Karkatasringi (Pistacia integerrima, Gl.) 1.60g + Mudgaparni (Phaseolus trilobus,Wh.PI) 1.60g + Aatich (Aconitum heterophyllum,Rt.) 1.60g + Mashparni (Teramus labialis,Wh.PI.) 1.60g + Svetajiraka (Cuminum cyminum,Fr.) 0.80g + Methi (Trigonella foenum-graecum,Sd.) 0.80g + Svetasariva (Hemidesmus indicus,Rt.) 0.80 g + Mandukaparni (Centella asiatica,Wh.PI) 0.80g and Ela (Elettaria cardamomum, Fr., Pdr.) 1.65g Excipients q.s. + Preservatives: Potassium sorbate IP, Sodium benzoate IP. |
| 73 | Galactagogue | Powder | Each 100g contains extracts derived from: Shatavari (Asparagus racemosus) Rt. Aq. Dry Ext . 15.00g + Khatika (Calcium carbonate) pwr. 2.50g + Palak (Spinacia oleracea) Sd./Lf. Pwr. 2.50g + Shigru (Moringa oleifera) Lf. Aq.Dry Ext.2.50g + Yashtimadhu (Glycyrrhiza glabra) Rt.Aq.Dry Ext 1.00 g + Panchtrina mool (Roots of five herbs) (Extract) Kusha (Eragrostiscynosuroides)+ Kasha (Saccharum spontaneum), + Sara (Saccharum munja) + Darbha (Imperata cylindrical) + Ikshu (Saccharum officinarum) Rt. Aq. Dry Ext . 1.00 g + Sowa (Anethum Sowa) Ft Aq. Dry Ext . 1.00 g + Vidaaree Kand (Ipomoea digitata) Rt. Aq. Dry Ext. 1.00 g + Safed Jeera (Cuminum cyminum) Ft Aq. Dry Ext .0.50 g |
| 74 | Galactagogue | Powder | Each 1g contains: Shatavari (Asparagus racemosus) Rt. Aq. Dry Ext 37.5 mg + Ksheer Vidari (Ipomoea digitata) Rt.Tr. Hyd. Alc.Dry Ext 1.000 mg + Sowa (Anethum sowa) Sd. Hyd. Alc. Dry Ext 1.250 mg + Yashtimadhu (Glycyrrhiza glabra) Rt. Aq. +Dry Ext 2.000 mg + Safed jeera (Cuminum cyminum) Sd. + Hyd. Alc.Dry Ext 0.500 mg + Palak (Spinacia oleracea) Sd.Aq. Dry Ext 14.706 mg + Panchatrina mool (Roots of five herbs) (Kusha(Eragrostis cynosuroides) + Kasha (Saccharum spontaneum) + Sara (Saccharum munja) + Darbha(Imperata cylindrica) + Ikshu (Saccharum officinarum)) Rt.Hyd.Alc.Dry Ext 2.000 mg Excipients q.s. Preservative : Sodium Benzoate, Sodium Methylparaben & Sodium Propylparaben |
| 75 | Galactagogue | Powder | Each 100 g contains aqueous dry extracts derived form : Shatavari (Asparagus racemosus) Roots 15 g + Sowa (Anethum sowa) Seeds 1 g + Vidari Kand (Pueraria tuberosa) Tuber 1 g + Gokhru (Tribulus terrestris) Fruits 2.5 g + Yashtimadhu (Glycyrrhiza glabra) Roots 1 g + Jeera Safed (Cuminum cyminum) Seeds 1 g + Ahliv (Chandrashur) (Lepidium sativum) Seeds 1g Excipients q.s. + Preservatives: Sodium Methylparaben IP & Sodium Propylparaben IP |



BREASTFEED NOT ONLY PRECIOUS BUT EQUALLY IMPORTANT FOR THE GROWTH & DEVELOPMENT OF THE BABY



Galactagogue

Pack : 250 g Granules



Galactagogue

Pack : 200 gm Granules

Galactagogue

Pack : 200 gm Granules



| Sr No. | Product Category | Dosage Form | Composition |
|--------|------------------|-------------|--|
| 76 | Galactagogue | Powder | Each g contains: Shatavari (Asparagus racemosus) Rt. Aq. Ext 37.5 mg + Gokhru (Tribulus terrestris) Fr. Hyd. Al. Ext 2.0 mg + Vidaaree kanda (Ipomoea digitata) Rt. Hyd. Al. Ext 1.0 mg+ Yashtimadhu (Glycyrrhiza glabra) Rt. Aq. Ext 2.0 mg + Chandrasura (Lepidium sativum) Sd. Hyd. Al. Ext 1.0 mg + Jeeraka (Cuminum cyminum) Fr. Hyd. Al. Ext. 1.0 mg + Sowa (Anethum sowa) Fr. Aq. Ext 1.25 mg + Nagarmotha (Cyperus rotundus) Rz. Hyd. Al. Ext 2.0 mg, Excipients q.s. Preservatives : Sodium Benzoate IP, Sodium Methylparaben IP & Sodium Propylparaben IP Colour : Caramel |
| 77 | Galactagogue | Powder | Each 100 g contains aqueous dry extracts derived from: Shatavari (Asparagus racemosus)Root (dry) 15.0 g + Palak (Spinacia oleracea)Seed/Leaf Powder (dry) 2.5 g + Yastimadhu (Glycyrrhiza glabra)Root (dry) 1.5 g + Sowa (Anethum sowa) Fruit (dry)1.0 g + Vidaaree Kanda (Ipomoea digitata) Root (dry) 1.0g + Safed Jira (Cuminum cyminum)Fruit (dry)0.5 g + Panchatrina mool + [Kusha(Eragrostis cynosuroides), + Kasha (Saccharum spontaneum), + Sara (Saccharum arundinaceum) + Darbha (Imperata cylindrica) + Ikshu (Saccharum officinarum)] Root (dry)1.0 g + Preservatives:Sodium Benzoate IP, Sodium Methylparaben IP, Sodium Propylparaben IP |
| 78 | Galactagogue | Powder | Each g contains:Shatavari (Asparagus racemosus) Rt.Aq. Dry Ext 37.500 mg + Ksheer Vidari (Ipomoea digitata)Tr.Hyd.Alc.Dry Ext 1.000 mg + Sowa (Anethum sowa) Sd.Aq.Dry Ext 1.250 mg + Yashtimadhu (Glycyrrhiza glabra) Rt.Aq. Dry Ext 2.000 mg + Safed jeera (Cuminum cyminum) Sd.Aq.Dry Ext 0.500 mg + Palak (Spinacia oleracea) Sd.Aq.Dry Ext 14.706 mg + Panchatrina mool (Roots of five herbs) + Kusha (Eragrostis cynosuroides), + Kasha (Saccharum spontaneum) + Sara (Saccharum munja) + Darbha (Imperata cylindrica) + Ikshu (Saccharum officinarum)) Rt.Aq. Dry Ext 2.000 mg Excipients q.s. + Bhaishjaya Ratnavali Preservative: Sodium Benzoate I.P., Sodium Methylparaben I.P. & Sodium propylparaben I.P |
| 79 | Galactagogue | Powder | Each gram contains: Shatavari (Asparagus racemosus) Rt. Aq.Ext 37.5 mg + Gokhru (Tribulus terrestris) Fr.Hyd.ALExt 2.0 mg + Vidaree kanda (Ipomoea digitata) Rt. Hyd.ALExt 1.0 mg + Yashtimadhu (Glycyrrhiza glabra) Rt. Aq.Ext 2.0 mg + Chandrasura (Lepidium sativum)Sd .Hyd.ALExt 1.0 mg + Jeeraka (Cuminum cyminum)Fr.Hyd.ALExt 1.0 mg + Sowa (Anethum sowa) Fr.Aq.Ext 1.25 mg + Nagamotha (Cyperus rotundus) Rz.Hyd.ALExt 2.0 mg Excipients q.s. + Preservatives: Sodium Benzoate IP + Sodium Methylparaben IP & Sodium Propylparaben IP |
| 80 | Galactagogue | Powder | Each gram contains: Shatavari (Asparagus racemosus) Rt. Aq.Ext 37.5 mg Gokhru (Tribulus terrestris) Fr.Hyd.ALExt 2.0 mg + Vidaree kanda (Ipomoea digitata) Rt. Hyd.ALExt 1.0 mg + Yashtimadhu (Glycyrrhiza glabra) Rt. Aq.Ext 2.0 mg + Chandrasura (Lepidium sativum)Sd .Hyd.ALExt 1.0 mg + Jeeraka (Cuminum cyminum)Fr.Hyd.ALExt 1.0 mg + Sowa (Anethum sowa) Fr.Aq.Ext 1.25 mg + Nagamotha (Cyperus rotundus) Rz.Hyd.ALExt 2.0 mg Excipients q.s., Preservatives: Sodium Benzoate IP, Sodium Methylparaben IP & Sodium Propylparaben IP |
| 81 | Galactagogue | Powder | Each g contains: Shatavari (Asparagus racemosus)Rt.Aq.Dry Ext. 37.5 mg + Khatika (Calcium carbonate) pwwr. 62.5 mg + Palak (Spinacia oleracea) Sd./Lf. Pwwr. 14.706 mg + Shigru (Moringa oleifera) Lf. Aq.Dry Ext. 2.50 mg + Yashtimadhu (Glycyrrhiza glabra) RT.Aq.Dry Ext. 2.00 mg + Sowa (Anethum sowa) Fr.Aq Dry Ext. 1.25 mg + ksheer Vidhari (Ipomoea digitata) Rt.Aq.Dry Ext 1.00 mg + Safed Jeera (Cuminum cyminum) Fr.Aq Dry Ext. 0.50 mg + Panchatrina mool (Roots of five herbs) Kusha (Eragrostis cynosuroides) Kasa (Saccharum spontaneum) Sara (Saccharum munja) Darbha (Imperata cylindrica) Ikshu (Saccharum officinarum) Rt.Aq.Dry Ext. 2.00 mg Excipients q.s. + Preservatives: Sodium Benzoate I.P, Sodium Methylparaben I.P and Sodium propyl paraben I.P |
| 82 | Hair Growth | Oil | Ingredients Plant part used Qty. + Sesamum indicum (Til) A.B.Seed 80% + Cocos nucifera (Narikel) A.B. Endocarp 20 % + Processed with + Azadirachta indica (Neem) A.B.+ Leaves 2.5% + Eclipta alba (Bhringraj) A.B. + Panchang 1.0% + Emblica officinalis (Amalaki) A.B. Fruit 1.0% + Indigofera tinctoria (Nilpushpa) A.B. Aerial 1.0% + Centella asiatica(Mandukparni) A.B. Panchang 1.0% + Cyperus rotundus (Nagarmoth) A.B. Root 1.0% + Jasminum officinale (Jati) A.B. Leaves 1.0% + Abrus precatorius (Gunja) A.B. Seed 1.0% + Datura metel (Dhattura) A.B. Leaves 1.0% + Glycyrrhiza glabra (Yashtimadhu) A.B. Root 0.5% + Crataeva nurvala (Varun) A.B. Bark 0.5% + Pongamia pinnata (Karani) A.B. Seed 0.5% + Solanum indicum (Brihati) A.B. Panchang 0.5% + Citrullus colocynthis (Indravaruni) A.B. Fruit 0.5% + Colour Fast Green FCF Fragrance + A.B.= Aryabhishak |

HELPS REDUCE STRESS & ANXIETY



Health Booster

Pack : 20 Sachets



Health Booster



Pack : 80 Tablets

Health Booster



Pack : 60 Tablets

Immuno Stimulant



Pack : 60 Tablets

Immuno Stimulant



Pack : 10 x 4g Sachet



| Sr No. | Product Category | Dosage Form | Composition |
|--------|------------------|-------------|--|
| 83 | Hair Growth | Oil | Ingredients Qty. Sesamum indicum (Til) Oil 85% + Cocos nucifera (Narikel) Oil 15 % + Processed with + Eclipta alba (Bhringraj) Panchang Ext. 2.0% + Emblica officinalis (Amalaki) Fruit Ext. 1.5% + Indigofera tinctoria (Nilpushpa) Aerial Ext. 1.0% + Centella asiatica(Mandukparni)Panchang Ext. 0.5% + Cyperus rotundus (Nagarmoth) Root Ext. 1.0% + Jasminum officinale (Jati) Leaves Ext. 1.0% + Datura metel (Dhattura) Leaves Ext. 1.0% + Glycyrrhiza glabra (Yashtimadhu) Root Ext. 1.0% + Crataeva nurvala (Varun) Bark Ext. 0.25% + Pongamia pinnata (Karanj) Seed Ext. 0.25% + Colour Fast Green FCF, Fragrance |
| 84 | Health Booster | Tablet | Each tablet contains : Amla (Withania somnifera) Rt. Ext. 250mg Excipientsq.s. |
| 85 | Health Booster | Tablet | Each tablet contains : Ashwagandha (Withania somnifera) Ext. 250mg Excipients q.s. |
| 86 | Health Booster | Tablet | Each tablet contains: Haldi (Curcuma longa) Ext. 250mg Excipients q.s. |
| 87 | Health Booster | Tablet | Each 550 mg tablet contains: Ashwagandha (Withania somnifera) Dried Hyd. Alc. Ext. 250 mg Excipients q.s. |
| 88 | Immunity Booster | Tablet | Each tablet contains 500 mg actives of: Saptaparna (Alstonia scholaris) St. Bk. aq. ext 100 mg + Katuki (Picrorhiza kurroa) Rz aq. ext 100 mg + Chirayata (Swertia chirata) Pl. aq. ext 100 mg + Kuberaaksha (Caesalpinia crista) Sd. Powder 200 mg |
| 89 | Immuno Booster | Tablet | Each film coated tablet contains: Ceratophyllum demersum (Saivala) (Spirulina) + Algae powder 400 mg + Piper nigrum (Maricha) Fruit Extract (BioPerine) 2.5 mg Excipients q.s. |
| 90 | Immuno Stimulant | Tablet | Each film coated tablet contains dry extract of: Piyusa (Cow Colostrum Powder) 400mg + Takra (Dried Powder) 30mg Excipients q.s. |
| 91 | Immuno Stimulant | Tablet | Each tablet contains : Giloy (Tinospora cardifolia) Ext 250mg Excipients q.s. |
| 92 | Immuno Stimulant | Powder | Each 90g powder contains: Tulsi (Ocimum sanctum) Leaves Powder 40g + Dalchini (Cinnamomum zeylanicum) Stem Bark powder 20g + Shunthi (Zingiber officinale) rhizome powder 20g + Marica (Piper nigrum) fruit powder 10g |
| 93 | Immuno Stimulant | Powder | Each 100 g Honitus Hot Sip granules is prepared/derived from: Dhanyaka (Coriandrum sativum, Fr.) 2.5 g + Maricha (Piper nigrum, Fr.) 2.25 g + Vasa (Adhatoda vasica, Lf.) + Shvetajiraka (Cuminum cyminum, Fr.) Each 2.0 g + Shankpushpi (Convolvulus pluricaulis, W.P.) + Kantakari (Solanum surattense, W.P.) each 1.75 g + Shunthi (Zingiber officinale, Rz.) + Bharangi (Clerodendrum serratum, Rt.) + Pippali (Piper longum, Fr.) + Kulanjana (Alpinia galanga, Rz.) + Daruharidra (Berberis aristata, St.) + Tulasi (Ocimum sanctum, Lf.) + Bhutrin (Cymbopogon citratus, Lf.) each 1.25 g + Yavani (Trachyspermum ammi, Fr.) 1.125 g + Yashti (Glycyrrhiza glabra, Rt. & Stolon) 0.75 g + Sharkara 94.4 g + Shunthi (Zingiber officinale, Rz., oil) 1 g + Madhu 2 g + Maricha (Piper nigrum, Fr. Ext.) 0.1 g + Preservative: Potassium Sorbate I.P. |
| 94 | Immuno Stimulant | Powder | Ingredients: Sodium Bicarbonate, Acidity Regulator (Citric Acid), Mineral (Zinc gluconate) (1.4%), Amla Ext. (Emblica officinalis) (1%), Sweetener (INS954(iv)) and purified water |
| 95 | Immuno Stimulant | Powder | Ingredients: Sodium Bicarbonate, Acidity Regulator (Citric Acid), Ashwagandha Ext. (Withania somnifera) (1%), Black Salt, Sweetener (INS954(iv)) and purified water. |
| 96 | Immuno Stimulant | Powder | Each 3 gm contains: Tulsi (Ocimum sanctum) Leaf 1.32 g + Dalchini (Cinnamomum zeylanicum) Bark 0.6702 g + Sunthi (Zingiber officinale) Rhizome 0.670 g + Marica (Piper nigrum) Fruit 0.34 g + Marica (Piper nigrum) Fruit 0.34 g |
| 97 | Immuno Stimulant | Powder | Ingredients: Acidity Regulator (Citric Acid), Raising Agent (Sodium Hydrogen carbonate), Maltodextrin, Orange |
| 98 | Immuno Stimulant | Powder | Powder (6%) + Herb Extract [Giloy (Tinospora cordifolia) (2%) + Tulsi (Ocimum sanctum) (0.8%) + Turmeric (Curcuma longa) (0.8 %)] + vitamin A Acetate + Vitamin E Acetate + Ascorbic acid + ergocalciferol + Ferrous fumarate + Zinc sulphate monohydrate + Copper gluconate + Sodium selenite + Capsicum annum extract and Sweetener (Sucralose) |

....Say
Goodbye to
Constipation



Laxative

Pack : 250g Powder

Laxative



Pack : 100g Husk

Laxative



Pack : 300g Powder

Laxative



Pack : 60 Tablets

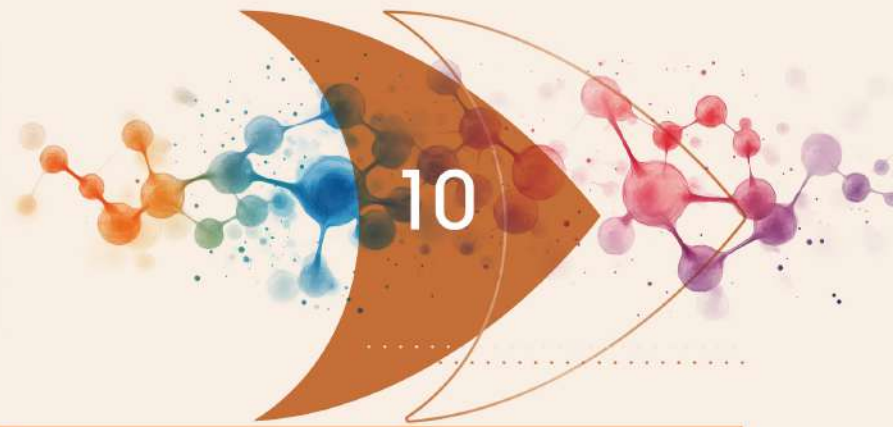
Laxative



Pack : 10g Sachet



TIRUPATI AYURVEDA



| Sr No. | Product Category | Dosage Form | Composition |
|--------|------------------|-------------|--|
| 99 | Laxative | Tablet | Each tablet contains Herbal extracts of: Triphala (Emblica officinalis + Terminalia chebula + Terminalia bellerica) Fr. Pericarp Dr.Aq. Ext 500 mg Excipients q.s |
| 100 | Laxative | Powder | Each 50 g /100g/200g contains Isapgol Powder 99% (Plantago ovata) Seed Husk 50g /100g /200gm |
| 101 | Laxative | Powder | Each 5.6 g contains : Isabgol Husk (Plantago ovata) Seed Husk powder 64% + Nimbu Satva (Citrus Medica) Satva Powder 19% + Svarjiksara (Shudh) 13% Excipients q.s., Contains permitted sweetener: Saccharin sodium IP 0.0171g/5.6g Flavour : Orange flavour and Orange Oil |
| 102 | Laxative | Powder | Each 5.6g contains Isabgol Husk (Plantago ovate)Seed Husk Powder 3.5g + Nimbukamlam (Shushkam) 1 g + Svarjiksara (Shudh) 0.913 g Excipient q.s. Contains permitted sweetener: Saccharin Sodium IP 17 mg & added flavor q.s. |
| 103 | Laxative | Powder | Each 100 g contains Isabgol (Husk) (Plantago ovata)Epidermis 30.77 g + Shalidhanya(Rice bran) (Oryza sativa) Fruit Husk@ 15.38 g + Gehun (Wheat Bran)(Triticum sativum)Seed 15.38 g + Ragi (Eleusine corocana)Seed 12.31 g + Excipients q.s.Contains permitted sweetener Saccharin Sodium IP 0.77g/100g. + Colour : Sunset Yellow Supra, Preservative: Calcium Propionate. + Flavour : Orange Siddha Bhaishajya Manimala, Bhava Prakasha,@ Sushruta Samhita |
| 104 | Laxative | Powder | Each 5 g contains Isapgol (Plantago ovata) Husk 2.0 g + Sonamukhi (Cassia angustifolia) Lf. Ext 0.115 g + Harad (Terminalia chebula) Fr. Ext 0.125 g + Amaltas (Cassia fistula)Fr. Pulp Ext 0.100 g + Mulethi (Glycyrrhiza glabra) Ext 0.050 g + Gulab (Rosa centifolia) FL. petals 0.250 g + Sarkara (Sugar) 1.755 g + Excipients: Citric Acid Monohydrate 0.150 g + Trusil Orange 0.150 g + Orange Oil 0.050 g + Contains Permitted Sweetner: Sucralose IP 0.050g/5g + Preservative: Sodium Benzoate IP, Colour: Sunset yellow FCF + Flavour: Orange premix spray dried powder |
| 105 | Laxative | Powder | Each 5g powder contains: Isapgol (Plantago ovata) Husk 2.00 g + Sonamukhi (Cassia angustifolia) Lf. dry ext. 0.75 g + Harad (Terminalia Chebula) Fr. dry ext. 0.50 g + Amaltas (Cassia fistula) Fr. dry ext. 0.50 g + Mulethi (Glycyrrhiza glabra) Rt. dry ext. 0.25g + Gulab (Rosa Centifolia) FL. petal 0.25 g + Sanuf (Foeniculum vulgare) Fr. 0.25g + Sanuf Taila (Foeniculum vulgare) Fr. Oil 0.05 g + Sarkara (Sugar) 1.9383 g Excipients q.s. Preservative : Sodium Benzoate IP 0.005 g |
| 106 | Laxative | Powder | Each 5g contains:Isapgol (Plantago ovata) Husk 3.5 g + Harad (Terminalia Chebula) Fruit Pericarp ext (Dry) 0.3 g + Mulethi (Glycyrrhiza glabra) Root dry ext. 0.25 g + Saunf (Foeniculum vulgare) Fruit 0.25 g + Amaltas (Cassia fistula) Fruit pulp . Ext (Dry) 0.2 g + Sonamukhi (Cassia angustifolia) Leaves Dry Aq. Ext. 0.15 g, Excipients q.s. Preservative: Sodium Benzoate IP 0.005g Containing permitted sugar free sweetener: Saccharin Sodium IP 0.012g/5g |
| 107 | Laxative | Powder | Extract of : Cissus quadrangularis (Hadjod) Bh.P. Stem 1.60 % Asparagus racemosus (Shatavari) Bh.P. Root tuber 0.50 % + Withania somnifera (Ashwagandha) Bh.P. Root 0.40 % + Vitex negundo (Nirgundi) Bh.P. Leaves 0.40 % + Terminalia arjuna (Arjun) Bh.P. Bark 0.25 % + Mucuna pruriens (Kauncha) Bh.P. Seed 0.20 % + Commiphora mukul (Shuddha Guggulu) Bh.P. Gum resin 0.20 % Excipiente Q.S. Colour: Chocolate brown Preservative: Sodium Benzoate IP, Sodium Methylparaben IP, Sodium Propylparaben IP, Bronopol IP., Bh.P. Bhavprakash Nighantu., Bh.P. Bhavprakash Nighantu. |
| 108 | Laxative | Powder | Each 5.6 g contains Isabgol Husk (Plantago ovata)Seed Husk Powder 3.5 g + Nimbukamlam (Citrus medica) 1 g + Svarjiksara (Shudh) 0.913 g Excipient q.s. Contains permitted sweetener: Saccharin Sodium IP 0.017 mg/5.6 g & added flavor q.s. |
| 109 | Laxative | Powder | Each 100 g contains Isabgol Powder (Plantago ovata) Seed Husk 100g |
| 110 | Laxative | Powder | Each 5 g powder contains: Isapgol (Plantago ovata) Husk 2.200 g + Sonamukhi (cassia angustifolia) Lf. Alc. Dry Ext 0.115 g + Triphala(Emblica officinalis/Terminalia chebula/Terminalia bellerica) Fr.Aq. Dry Ext 0.125 g + Ajwain (Trachyspermum ammi) Sd. Aq. Dry Ext 0.100g + Gulab (Rosa centifolia) Fl.Pt.Pwdr. 0.250 g, Excipients q.s + Preservative: Sodium Benzoate, Bhav Prakash Nighantu,Siddha Bhaishajya Manimala |
| 111 | Laxative | Powder | Each g contains: Isabgol (Plantago ovata) Husk 52.5% w/w +Nimbu satva (Citrus medica) Powder 19.0%w/w + Svarjiksara (Shudh)Powder 13.0% w/w + Sonamukhi (Cassia angustifolia) Lf. Powder 12.0% w/w Excipients q.s |



ENSURING SMOOTH FUNCTIONING OF LIVER



Liver Tonic

Pack : 200ml Syrup

Liver Tonic

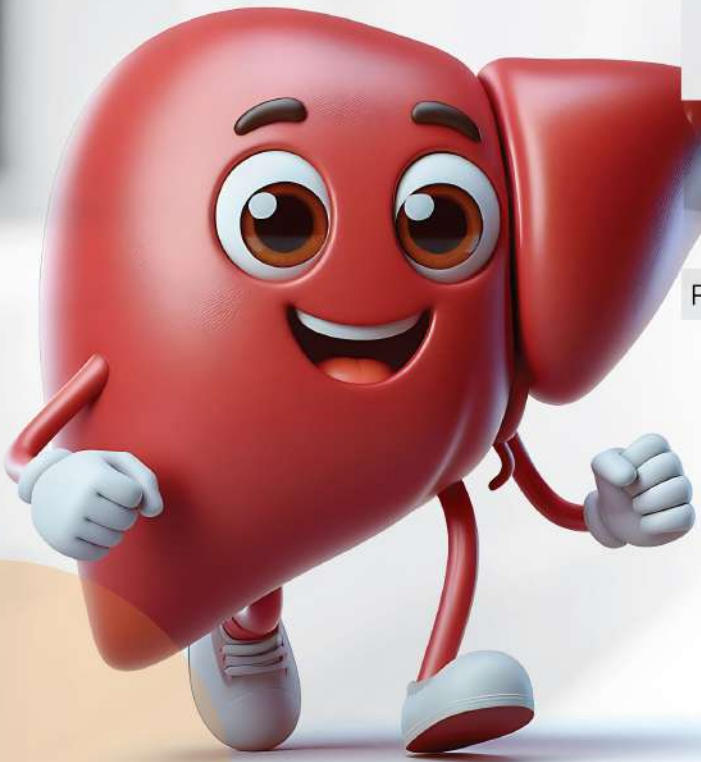


Pack : 10 x 10 Tablets

Liver Tonic



Pack : 100 ml Syrup



TIRUPATI AYURVEDA



| Sr No. | Product Category | Dosage Form | Composition |
|--------|--------------------|-------------|---|
| 112 | Laxative | Powder | Permitted color: Tartrazine laxative Powder Artificial sweetner: Sucralose IP 0.268% w/w |
| 113 | Liver Tonic | Tablet | Each film coated tablet contains: Bhringaraj (Eclipta alba) 300 mg (Whole Plant Extract) 50 mg + Bhumyاملaki (Phyllanthus niruri) 300 mg (Whole Plant Extract) 50 mg + Revandchini (Rheum emodi) 170 mg (Root Extract) 50 mg + Sarapunkha (Tephrosia purpurea) 180 mg (Whole Plant Extract) 30 mg + Kasni (Cichorium intybus) 180 mg (Seeds Extract) 30 mg + Giloy (Tinospora cordifolia) 72 mg (Stem Extract) 12 mg + Hareetaki (Terminalia chebula) 72 mg (Fruits Pericarp Extract) 12 mg + Punarnava (Boerhaavia diffusa) 100 mg (Whole Plant Extract) 10 mg + Kalmegh (Andrographis paniculata) 60 mg (Whole Plant Extract) 10 mg + Kutki (Picorrhiza kurroa) 60 mg (Rhizome Extract) 10 mg Pittapara (Fumaria parviflora) 30 mg (Whole Plant Extract) – 5 mg Excipients q.s. + Preservatives: Sodium Methyl Paraben IP & Sodium Propyl Paraben IP + Colours: Lake of Erythrosine, Ponceau 4R & Titanium Dioxide IP, Quantity of Raw Herbs |
| 114 | Liver Tonic | Tablet | Each film coated tablet contains: Bhringaraja (Eclipta alba) 300 mg + Whole Plant Extract 50 mg + Bhumyamalaki (Phyllanthus niruri) 300 mg + Whole Plant Extract 50 mg + Revand Chini (Rheum emodi) 170 mg + Root Extract 50 mg + Sarapunkha (Tephrosia purpurea) 180 mg + Whole Plant Extract [^] 30 mg + Kasni (Cichorium intybus) 180 mg + Seeds Extract 30 mg + Guduchi (Tinospora cordifolia) 72 mg + Stem Extract S 12 mg + Haritaki (Terminalia chebula) 72 mg + Fruits pericarp Extracts 12 mg + Punarnava (Boerhaavia diffusa) 100 mg + Whole Plant Extracts 10 mg + Kalmegha (Andrographis paniculata) 60 mg + Whole Plant Extract [^] 10 mg + Kutki (Picorrhiza kurroa) 60 mg + Rhizome Extracts 10 mg + Parpata (Fumaria parviflora) 30 mg + Whole Plant Extract S 5 mg Excipients q.s. + Colours : Lake of Erythrosine & Lake of Ponceau 4R & Titanium Dioxide IP + Preservatives: Sodium Methyl Paraben IP & Sodium Propyl Paraben IP" |
| 115 | Liver Tonic | Syrup | Each 5 ml contains the following dry extracts of: Bhringaraj (Eclipta alba) (Whole Plant) 100 mg + Bhumyamalaki (Phyllanthus niruri) (Whole Plant) 100 mg + Revandchini (Rheum emodi) (Root) 100 mg + Sarapunkha (Tephrosia purpurea) (Whole Plant) 60 mg + Kasni (Cichorium intybus) (Seeds) 60 mg + Giloy (Tinospora cordifolia) (Stem) 24 mg + Hareetaki (Terminalia chebula) (Fruits Pericarp) 24 mg + Punarnava (Boerhaavia diffusa) (Whole Plant) 20 mg + Kalmegh (Andrographis paniculata) (Whole Plant) 20 mg + Kutki (Picorrhiza kurroa) (Rhizome) 20 mg + Pittapara (Fumaria parviflora) (Whole Plant) 10 mg Flavoured Syrup base q.s., Preservatives: Sodium Benzoate IP, Sodium Methylparaben IP & Sodium Propylparaben IP, Flavour: TuttiFrutti |
| 116 | Liver Tonic | Drops | Each ml contains the following extracts liquid w/v : Bhringaraj (Eclipta alba) (Whole Plant) 20 mg + Bhumyamalaki (Phyllanthus niruri) (Whole Plant) 20 mg + Amlaparin (Rheum emodi) (Root) 20 mg + Sarapunkha (Tephrosia purpurea) (Whole Plant) 12 mg + Kasni Vanya (Cichorium intybus) (Seeds) 12 mg + Guduchi (Tinospora cordifolia) (Stem) 4.8 mg + Hareetaki (Terminalia chebula) (Fruits Pericarp) 4.8 mg + Punarnava (Boerhaavia diffusa) (Whole Plant) 4 mg + Kalmegha (Andrographis paniculata) (Whole Plant) 4 mg + Katuka Rohini (Picorrhiza kurroa) (Rhizome) 4 mg + Parpat (Fumaria parviflora) (Whole Plant) 2 mg Flavoured Syrup base q.s., Preservatives: Sodium Methylparaben IP & Sodium Propylparaben IP |
| 117 | Liver Tonic | Syrup | Each 5 ml contains the following aq. extracts of : Bhringaraj (Eclipta alba) (Whole Plant) 100 mg + yاملaki (Phyllanthus niruri) (Whole Plant) 100 mg + Revandchini (Rheum emodi) (Root) 100 mg + Sarapunkha (Tephrosia purpurea) (Whole Plant) 60 mg + Kasni (Cichorium intybus) (Seeds) 60 mg + Guduchi (Tinospora cordifolia) (Stem) 24 mg + Hareetaki (Terminalia chebula) (Fruits Pericarp) 24 mg + Punarnava (Boerhaavia diffusa) (Whole Plant) 20 mg + Kalmegh (Andrographis paniculata) (Whole Plant) 20 mg + Kutki (Picorrhiza kurroa) (Rhizome) 20 mg + Parpat (Fumaria parviflora) (Whole Plant) 10 mg Flavoured Syrup base q.s. Preservatives: Sodium Benzoate IP, Sodium Methylparaben IP & Sodium Propylparaben IP Colour: caramel , Flavour: TuttiFrutti, |
| 118 | Liver Tonic | Syrup | Each 5 ml contains the following aq. extracts of : Kasni (Cichorium intybus) Seed 35 mg + Himsra (Capparis spinosa) Root 35 mg + Arjuna (Terminalia arjuna) Bark 15 mg + Kakamachi (Solanum nigrum) Fruit 15 mg + Bhumyaamalaki (Phyllanthus amarus) Whole plant 8 mg + Biranjasipha (Achillea millefolium) Fruit 8 mg + Kalmegha (Andrographis paniculata) whole plant 8.3 mg + Jhavuka (Tamarix gallica) leaf 8 mg + Amalaki (Embelia officinalis) Fruit Pericarp 5 mg + Haritaki (Terminalia chebula) Pericarp Fruit 4 mg + Bhringaraj (Eclipta alba) Whole plant 5 mg + Daruharidra (Berberis lycium) Root 2.5 mg + Vidanga (Embelia ribes) Fruit 10 mg + Punarnava (Boerhaavia diffusa) Whole Plant 4.2 mg + Guduchi (Tinospora cordifolia) Leaf 6.75 mg + Mulaka (Raphanus sativus) Whole plant 4.95 mg + Chitraka (Plumbago zeylanica) Root 5 mg + Parpata (Fumaria parviflora) Whole plant 5 mg + Excipients q.s. Preservatives: Sodium Methylparaben IP, Sodium Propyl Paraben IP, Sodium Benzoate IP, Colour: Caramel |

SUPPORT INTIMATE AREA HYGIENE

Lubrication

Pack : 20 x 30g Gel



Lubrication



Pack : 30g Gel

Memory Enhancer



Pack : 200ml Syrup

Menorrhagia/
Metrorrhagia



Pack : 100ml Syrup

Menorrhagia/
Metrorrhagia



Pack : 300 ml Syrup



TIRUPATI AYURVEDA



| Sr No. | Product Category | Dosage Form | Composition |
|--------|------------------------------|-------------|--|
| 119 | Liver Tonic | Syrup | Each 5 ml contains Aqueous extract of : Kasni (Cichorium intybus)Seeds 35 mg + Himsara(Capparis spinosa)Roots35 mg + Arjuna (Terminalia arjuna) Bark 15 mg + Kakamachi (Solanum nigrum)Fruits15 mg + Bhumyaamalaki (Phyllanthus amarus) Whole Plant8mg + Biranjasipha (Achillea millefolium) Fruit 8 mg + Jhavuka (Tamrix gallica) Leaf8 mg + Kalamegh(Andrographis paniculata)Whole Plant 8.3mg + Amalaki (Emblica officinalis) Fruit5 mg + Haritaki (Terminalia chebula) Fruit4 mg + Bhringaraja (Eclipta alba) Whole Plant5mg + Daruharidra (Berberis aristata) Whole Plant2.5 mg + Vidanga (Embelia ribes) Fruit 10 mg + Punarnava(Boerhaavia diffusa) Whole Plant4.2 mg + Guduchi(Tinospora cordifolia) Leaf6.75 mg + Mulaka (Raphanus sativus) Whole Plant4.95 mg + Chitraka(Plumbago zeylanica) Root5 mg + Parpata(Fumaria parviflora) Whole Plant6.75 mg + Contains Artificial sweetner Saccharin Sodium IP 2.5 mg + API Flavoured Syrup base q.s., Preservatives: Sodium Methyl Praben IP,Sodium Propyl Paraben IP |
| 120 | Liver Tonic | Syrup | Each 5 ml contains extracts of: Kasani(Cichorium intybus) Seed 35mg Himsra (Capparis spinosa) Root 35 mg + Arjuna(Terminalia arjuna) Bark 15 mg + Kakamachi(Solanum nigrum) Fruit 15 mg + Bhumyaamalaki (Phyllanthus amarus)Whole plant 8 mg + Kalamegha(Andrographis paniculata) + whole plant@ 8.3 mg + Amalaki (Emblica officinalis) Fruit 5 mg + Haritaki(Terminalia chebula)Fruit4 mg + Bhringaraja(Eclipta alba) Whole plant 5 mg + Daruharidra(Berberis lycium)Root 2.5 mg + Vidanga (Embelia ribes) Fruit 10 mg + Punarnava (Boerhaavia diffusa) Whole Plant 4.2 mg + Guduchi (Tinospora cordifolia) Leaf 6.75mg + Mulaka(Raphanus sativus) Whole plant 4.95 mg + Chitraka (Plumbago zeylanica)Root 5 mg + Parpata (Fumaria parviflora) Whole plant 5 mg + Excipients q.s, Preservatives: Sodium Methylparaben IP,Sodium Propyl Paraben IP,Sodium Benzoate IP, Flavour : Orange, Pineapple, Colour: Caramel, Artificial Sweetner : Saccharin Sodium IP 2.5mg/5 ml |
| 121 | Liver Tonic | Syrup | Each 5 ml contains extracts of : Himsra (Capparis spinosa)Root 34 mg + Kasani(Cichorium intybus) Seed @ 34 mg + Kakamachi(Solanum nigrum) Fruit 16 mg + Arjuna(Terminalia arjuna)Bark 16 mg + Kasmard (cassia occidentalis)seed8 mg + Jhavuka (Tamarix gallica) leaf 8 mg + Guduchi (Tinospora cordifolia)Leaf 30 mg + Tuls(i Ocimum Sanctum)leaf10 mg + Bhringaraja(Eclipta alba) Whole plant 5 mg + Punarnava(Boerhaavia diffusa) Whole Plant4.2 mg + Daruharidra(Berberis lycium)Root 2.5 mg + Mulaka(Raphanus sativus) Whole plant 4.95 mg + Amalaki (Emblica officinalis) Fruit Pericarp 5 mg Chitraka (Plumbago zeylanica)Root 5 mg + Vidanga (Embelia ribes) Fruit 10 mg + Haritaki (Terminalia chebula) PericarpFruit 4 mg + Parpata (Fumaria parviflora) Whole plant 5 mg + Bhumyaamalaki (Phyllanthus niruri) Whole plant8 mg Excipients q.s., Preservatives: Sodium Methylparaben IP,Sodium Propyl Paraben IP,Sodium Benzoate IP Colour: Caramel |
| 122 | Liver Tonic | Oral liquid | Each 5 ml contains extracts of:Kasani (Cichorium intybus) Sd.Aq.Ext 3.5 mg +Himsra (Capparis spinosa) Rt .Aq.Ext 0.875 mg + Arjuna (Terminalia arjuna) Bk. Aq.Ext 1.5 mg + Kakamachi (Solanum nigrum) Fr. Aq.Ext 1.5 mg + Bhumyaamalaki (Phyllanthus niruri) Wh. Pl.Hyd.AL Ext 0.8 mg + Kalamegha (Andrographis paniculata) Wh. Pl.Hyd.AL Ext 0.83 mg + Amalaki (Emblica officinalis) Fr. Pr.Aq.Ext 0.5 mg + Haritaki (Terminalia chebula) Fr. Pr.Aq.Ext 0.4 mg + Bhringaraja (Eclipta alba) Wh. Pl.Hyd.AL Ext 0.5 mg + Daruharidra (Berberis lycium) Rt .Aq. Ext 0.25 mg + Vidanga (Embelia ribes) Fr.Hyd.AL Ext 1.0 mg + Punarnava (Boerhaavia diffusa) Wh. Pl.Hyd.AL Ext 0.7 mg + Guduchi (Tinospora cordifolia) St.Hyd.AL Ext 0.675 mg + Mulaka (Raphanus sativus) Wh. Pl.Hyd.AL Ext 0.55 mg + Chitraka (Plumbago zeylanica) Rt. Hyd.AL Ext 1.0 mg + Parpata (Fumaria parviflora) Wh. Pl.Hyd.AL Ext 1.0 mg Excipients q.s., API Preservatives: Sodium Methylparaben, Sodium Propylparaben IP,Sodium Benzoate IP Colour: Caramel Artificial Sweetener: Saccharin Sodium I.P. 2.5 mg/5ml |
| 123 | Lubrication | Gel | Each g Contains: Ghritkumari (Aloe barbadensis) Lf.Pulp Powder 5.0 mg + Shatavari (Asparagus racemosus)Rz. Extract0.1 mg + Baseq.s., Preservative : Phenoxyethanol IP |
| 124 | Memory Enhancer | Syrup | Each 10 ml contains herb of: Vaca (Acorus calamus) Rhizome 100 mg, Brahmi(Bacopa monnieri) Whole Plant 200 mg, Sankhapuspi(Convulvulus pluricaulis) Whole Plant 200 mg, Yashtimadhu(Glycyrrhiza glabra) Root 150 mg, Amalaki(Phyllanthus emblica)Fruit 200 mg, Ashwagandha(Withania somnifera) Root 100 mg, Shatavari (Asparagus racemosus) Root 200 mg , Guduchi(Tinospora cordifolia) Stem 100 mg, Preservatives: Sodium Banzoate IP, Sodium Methylparaben IP, Sodium Propylparaben IP, Colour: Caramel |
| 125 | Menorrhagia/ Metrorrhagia | Syrup | Each 5 ml contains the following dry extracts of : Ashoka (Saraca indica) (Bark) 1800 mg + Lodhra (Symplocos racemosa) (Bark) 250 mg + Dhatki (Woodforia fruticosa) (Fruit) 140 mg + Amalaki(Emblica officinalis) (Fruit) 20 mg + Regulator Baheda (Terminalia belerica) (Fruit Pericarp) 20 mg + Hareetaki (Terminalia chebula) (Fruits Pericarp) 20 mg + Sunthi (Zingiber officinale) (Rhizome) 20 mg + Amra (Mangifera indica) (Bark) 20 mg + Mustaka (Cyperus rotundus) (Rhizome) 20 mg + Rakta Chandan (Pterocarpus santalinus) (Wood Extract) 20 mg + Safed Jeera (Cuminum cyminum) (Seed) 10 mg + Daruhridra (Berberis aristata) (Whole Plant) 10 mg + Adusa (Adhatoda vasica) (Flower) 10 mg + Pippali (Piper longum) (Fruit) 10 mg + Kumud (Nymphaea stellata) (Flower) 10 mg + Shahad (Honey) 500 mg + Excipients q.s., API Preservatives: Sodium Methylparaben IP &Sodium PropylparabenIP Flavour: Mix Fruit |



COMPLETE OUTDOOR PROTECTION FROM MOSQUITOES

Mosquito Repellent

Pack : 10 x 1 Roll On



Mosquito Repellent



Pack : 10 ml Roll On

Pain Reliever



Pack : 50 ml Oil

Pain Reliever



Pack : 50ml Roll On

Pain Reliever



Pack : 50ml Roll On

TIRUPATI AYURVEDA



| Sr No. | Product Category | Dosage Form | Composition |
|--------|--------------------|-------------|---|
| 126 | Mosquito Repellent | Oil | Each 10 ml contain : Nilgiri (Eucalyptus globulus) Leaf Oil 2.49 ml + Neem (Azadirachta indica) Seed Oil 0.01 ml + Rosemary (Rosmarinus officinalis) Aerial oil 0.01 ml Base q.s., |
| 127 | Mosquito Repellent | Oil | Each 10 ml contain : Nilgiri (Eucalyptus globulus) Leaf oil 2.49 ml + Neem (Azadirachta indica) Seed oil 0.3 ml + Rosemary (Rosmarinus officinalis) Aerial oil 0.01 ml Base q.s., Perfume: Citronella Oil & Citrus Floral |
| 128 | Mosquito Repellent | Oil | Composition% w/v Tulsi (Ocimum basilicum)Leaf oil4% + Neem (Azadirachta indica) Seed oil1% + Kapur (Cinnamomum camphora)Crystal3% + Harichaaya (Cymbopogon citratus) wh.pl.Oil 1% + Nilgiri (Eucalyptus globulus) Leaf oil 1% + Base q.s. |
| 129 | Mosquito Repellent | Oil | Each ml contains : Nilgiri (Eucalyptus globulus) Lf. oil 0.249 ml + Neem (Azadirachta indica) Sd. oil 0.03 ml + Rosemary (Rosmarinus officinalis) Aerial Part oil 0.001 ml Base q.s. |
| 130 | Nourishment oil | Oil | Coconut Oil 99.99 % + AntiOxidant (INS319) |
| 131 | Pain Reliever | Oil | Each 10 ml contains : Oils of Gandhapura (Gaultheria fragrantissima) Lf. Oil 20%v/v + Lemon grass Oil (Cymbopogon citratus) Whole Plant 5.5%v/v + Nilgiri (Eucalyptus globulus) Lf. Oil 14.5%v/v + Lavang Oil (Eugenia caryophyllus) flower bud2%v/v + Crystals of Pudina (Mentha viridis) Crystal 15.5%w/v + Kapur (Cinnamomum camphora)Crystal 14.5%w/v Excipients q.s. |
| 132 | Pain Reliever | Oil | Gandhapura Oil (Gaultheria fragrantissima) Leaf 28 %v/v + Kapura Crystal(Cinnamomum camphora)Leaf 11 %w/v + Pudina Crystal(Mentha arvensis) Aerial Part 5 %w/v + Pudina Oil (Mentha arvensis) Leaf 6 % v/v + Nilgiri Oil (Eucalyptus globulus) Leaf 6 %v/v + Cajuput Oil (Melaleuca leucadendron)Leaf 6 %v/v + Lavanga Oil (Syzygium aromaticum) Flower Bud 5 %v/v + Dalchini Oil(Cinnamomum zeylanicum) Bark 5 %v/v + Lavender Oil (Lavandula stoechas) Flower 5 %v/v + Sallaki (Boswellia serrata) gum resin3 %v/v + Mahanarayana Oil10 %v/v Base q.s. |
| 133 | Pain Reliever | Oil | Composition : In % w/v Extract Derived From: Haritaki(Terminalia chebula) Fr. 2 + Amalaki (Emblca officinalis) Fr. 2 + Bibhitaki(Terminalia bellerica)Fr. 2 + Nimba(Azadirachta indica)Lf. 2 + Nirgundi(Vitex negundo)Lf. 3.5 + Ashvagandha(Withania somnifera)Rt. 3.5 + Gokshura(Tribulus terrestris)Fr. 3.5 + Rasna(Pluchea lanceolata)Lf. 3 + Vacha(Acarus calamus)Rz. 2.5 + Jyotishmati(Celastrus paniculatus)Sd. 2 + Oils of Tila(Sesamum indicum)Sd. Oil 25 + Gandhapura (Gaultheria fragrantissima) Lf. oil 20 + Nilgiri(Eucalyptus globulus) Lf. Oil 15 + Sarala(Pinus roxburghii)Ht.Wd. Oil 5 + Crystals of Pudina (Mentha viridis) Crystal 6 + Kapur(Cinnamomum camphora) Crystal 4 Excipients q.s. |
| 134 | Pain Reliever | Oil | Each 10 ml contains : Gandhapura Oil(Gaultheria fragrantissima) Lf. 15%w/v + NilgiriOil (Eucalyptus globulus) Lf. 6%w/v + Pudina crystal (Mentha viridis) Aerial Part 5%w/v + Lemon grass Oil (Cymbopogon citratus) Whole Plant 5.5%v/v + Kattrna Oil(Cymbopogon citratus)Whole Plant 4%w/v + Kapur Crystal (Cinnamomum camphora)Whole Plant 4.0%w/v + Lavang Oil (Eugenia caryophyllus) flower bud 1.50%w/v Base q.s. |
| 135 | Pain Reliever | Oil | Each 10 ml contains : Gandhapura oil(Gaultheria fragrantissima) Leaf 20%w/v + Karpura oil (Cinnamomum camphora)Leaf 5%w/v + Pudina oil (Mentha arvensis)Leaf 3%w/v + Nilgiri oil (Eucalyptus globulus) Leaf 4%w/v + Dalchini oil (Cinnamomum zeylanicum)Dried inner bark 1%w/v + Lavang Oil (Syzygium aromaticum) Flower bud2%w/v + Lal Mirch oil (Capsicum annum)Fruit 2.6%w/v Base q.s., |
| 136 | Pain Reliever | Oil | Each 5 ml contains: Nilgiri (Eucalyptus globulus) Lf oil 1000 mg + Kunduru (Boswellia serrata) Exd. oil 150 mg + Kapur (Cinnamomum camphora)Lf. Satva 50 mg + Pudina (Mentha arvensis) Aerial part Satva 50 mg + Lavang (Syzygium aromaticum)Fl. bud oil 50mg Base q.s. |
| 137 | Pain Reliever | Oil | Each ml contains:Gandhapura ka tel (Gaultheria fragrantissima) Lf. Oil 28 % v/v + Karpura (Cinnamomum camphora) Lf. Oil 11 % v/v + Pudina (Mentha arvensis) Lf. Satva 10 % w/v + Pudina (Mentha arvensis) Lf. Oil 6 % v/v + Nilgiri (Eucalyptus globulus) Lf. Oil 6 % v/v + Cajuput (Melaleuca leucadendron) Lf. Oil 6 % v/v + Lavang (Syzygium aromaticum) Fl. Bud Oil 5 % v/v + Dalchini (Cinnamomum zeylanicum) Dr.Inner Bk.Oil 5 % v/v + Lavender (Lavandula stoechas) Fl. Oil 5 % v/v + Light liquid paraffin q.s |



GET RID OF PAIN NATURALLY

Pain Reliever

Pack : 10 ml Roll On



Pain Reliever



Pack : 50 ml Roll-On

Platelets Enhancer



Pack : 5 x 15 Tablets

Sexual Wellness



Pack : 60 Tablets

Sexual Wellness



Pack : 10 x 10 Tablets



| Sr No. | Product Category | Dosage Form | Composition |
|--------|--------------------|-------------|--|
| 134 | Pain Reliever | Oil | Each 5 ml contains: Nilgiri Oil (Eucalyptus globulus) Leaf Oil 1000 mg + Kunduru Oil (Boswellia serrata) Exd. Oil 150 mg + Kapur(Cinnamomum camphora) Leaf Satva 50 mg + Pudina (Mentha arvensis) Aerial Part Satva ^ 50 mg + Lavang Oil (Syzygium aromaticum) Flower Bud Oil^ 50 mg Base qs. |
| 135 | Pain Reliever | Oil | Each 10 ml Contains : Gandhapura (Gaultheria fragrantissima) Lf. Oil 20% v/v Nilgiri (Eucalyptus globulus) Lf. Oil 14.5% v/v + Pudina (Mentha viridis) Arl.Part Satva 6.0 % w/v + Kapur (Cinnamomum camphora) Wh.Pt.Satva 6.0 % w/v + Kattrina (Cymbopogon citratus) Wh.Pt.Oil 5.5% v/v + Lavang (Eugenia caryophyllus) fl .Bud Oil 2% v/v Excipients q.s. |
| 136 | Pain Reliever | Oil | Each ml Contains: Pudina (Mentha arvensis) Lf. Satva 41.54 %w/w + Karpura (Pinus roxburhii) Bk.Exd./Satva 37.81% w/w Excipients q.s. |
| 137 | Pain Reliever | Capsule | Each 500 mg hard gelatin capsule contains: Boswellia serrata Ext 40 mg + Withania somnifera Root40 mg + Commiphora mukul Ext40 mg + Purified Asphaltam Ext 30 mg + Pluchea lanceolata Ext 20 mg + Strychnos nuxvomica Seed30 mg + Trigonella foenum graecum Ext 150 mg + Zingiber officinale Rhizome 150 mg + Preservatives: Sodium Methylparaben IP, Sodium Propylparaben IP 0.2 mg. |
| 138 | Platelets Enhancer | Tablet | Each filmcoated tablet contains Extract of Eranda karkati (Carica papaya Lf.) 1100 mg Excipients q. s., Colours : Lake Erythrosine, lake Ponceau4R & Titanium Dioxide IP. |
| 139 | Platelets Enhancer | Syrup | Each 5ml (one teaspoonful) contains aqueous extracts of : Papitaa(Carica papaya) Leaf 275 mg Excipients q.s., Preservatives: Sodium Methylparaben I.P., Sodium Benzoate I.P. |
| 140 | Platelets Enhancer | Capsule | Each capsule contains: Papitaa (Carica papaya) Leaf Dry Extract 350 mg + Guduci (Tinospora cordifolia) Stem Dry Extract 150 mg + Dugdha (Goat Milk Powder) 100 mg Excipients q.s |
| 141 | Psoriasis | Oil | Composition : % w/v Extract derived from : Khair(Acacia catechu) Ht. wd5.0, Indrayava(Holarrhena antidysentrica) Seed5.0 + Manjistha(Rubia cordifolia)Steam3.5 + Bakuchi(Psoralea corylifolia)Fruit3.5 + Neem(Azadirachta indica)Leaf 3.5 + Karanj(Pongamia pinnata)Seed 3.5 Oils of : Narikel (Cocos nucifera) Endosperm oil 1.5 + Neem(Azadirachta indica) Fruit oil 0.3 + Til (Sesamum indicum)Seed oil q.s. |
| 142 | Purgative | Tablet | Each tablet contains aqueous extracts of : Senna (Cassia angustifolia) Leaf 250mg + Triphala (Terminalia chebula, Terminalia bellirica & Emblica officinalis) Fruit Pericarp80 mg + Saunf (Foeniculum vulgare) Fruit 50mg + Ajwain (Trachyspermum ammi) Fruit 30mg + Kalimirch (Piper nigrum) Fruit 25mg + Haritaki (Terminalia chebula) Fruit Pericarp 20mg + Yashtimadhu (Glycyrrhiza glabra) Root 20mg + Svarjiksara (Sodium bicarbonate) Powder 10mg + Nimbukamlam(Citric acid) Powder 8mg + Nisot (Operculina turpethem) Root 5mg Excipients q.s. CharakSamhita |
| 143 | Purgative | Powder | Each 100g contains herbs powder of: Senna (Cassia angustifolia) Leaf 50.60%w/w + Kala Namak (Black salt) Powder 11.00%w/w + Ajwain (Trachyspermum ammi) Fruit 10.08%w/w + Haritaki (Terminalia chebula) Fruit 10.08%w/w + Nisot (Operculina turpethem) Root 5.05%w/w + Swarjiksara (Sodium bicarbonate) Powder 4.85%w/w + Sendha Namak (Rock Salt) Powder 3.84%w/w + Saunf (Foeniculum vulgare) Fruit 1.80%w/w + Baheda (Terminalia belerica) Fruit 1.00%w/w + Amla (Emblica officinalis) Fruit 1.00%w/w + Pippali (Piper longum) Fruit 0.1%w/w + Marich (Piper nigrum) Fruit 0.1%w/w + Sunthi (Zingiber officinale) Rhizome 0.1%w/w + Amaltas (Cassia fistula) Fruit pulp 0.1%w/w + Yastimadhu (Glycyrrhiza glabra) Root 0.1%w/w + Castor Oil (Ricinus cummunis) Seed 0.33%w/w + Preservative: Sodium Methylparaben IP, Sodium Propylparaben IP |
| 144 | Sexual Wellness | Tablet | Each tablet is prepared From: Gokshur (Tribulus terrestris,Fr.,Ext.) 250 mg Excipients q.s. |
| 145 | Sexual Wellness | Oil | Each 10 ml oil is prepared from the herbs in following quantity: Malkangni oil (Celastrus paniculatus) Dried seeds 5 ml + Jatoon oil (Olea europea)Fruits2.5 ml + Processed with Til Oil: + Akarkara (Anacyclus pyrethrum) Dried roots50 mg + Jaiphal(Myristica fragrans) Dried seeds30 mg + Lavang(Syzygium aromaticum) Flower bud30 mg + Ashwagandha (Withania somnifera)Roots30 mg + Shatavari(Asparagus racemosus) Roots30 mg + Kalimirch(Piper nigrum)Dried fruits30 mg + Pippali (Piper longum)Dried fruits30 mg + Til oil (Sesamum indicum)Dried seedsq.s. to 10 ml + Antioxidant: Butylated Hydroxytoluene IP |
| 146 | Sexual Wellness | Capsule | Each capsule contains: Gokhru (Tribulus terrestris) Frt. Extract 100 mg + Ashwagandha (Withania somnifera) Rt. Extract 100 mg + Shunthi (Zingiber officinalis) Rz. Powder 50 mg + Shatavari (Asparagus racemosus) Rt. Extract 50 mg + Excipients q.s. |



Tirupati Group

NH-72, Nahan Road, Paonta Sahib, Distt. Sirmour,
Himachal Pardesh 173025 INDIA

Tel. : +91 9816700121/ 122/ 123

Email : info@tirupatigroup.co.in

 [tirupati-groupofcompanies](https://www.linkedin.com/company/tirupati-groupofcompanies)

